



Strategic Action Plan: Update

Vision: **Prioritization, Collaboration, and Action**

- Use statewide identified sagebrush core areas and tools to prioritize conservation actions in habitat that maximizes the ecological potential for sage-grouse, while indirectly benefitting other sagebrush associated species.
- Guide collaboration efforts with Federal, State, Counties, Tribal Nations, Local conservation groups, NGOs and Others



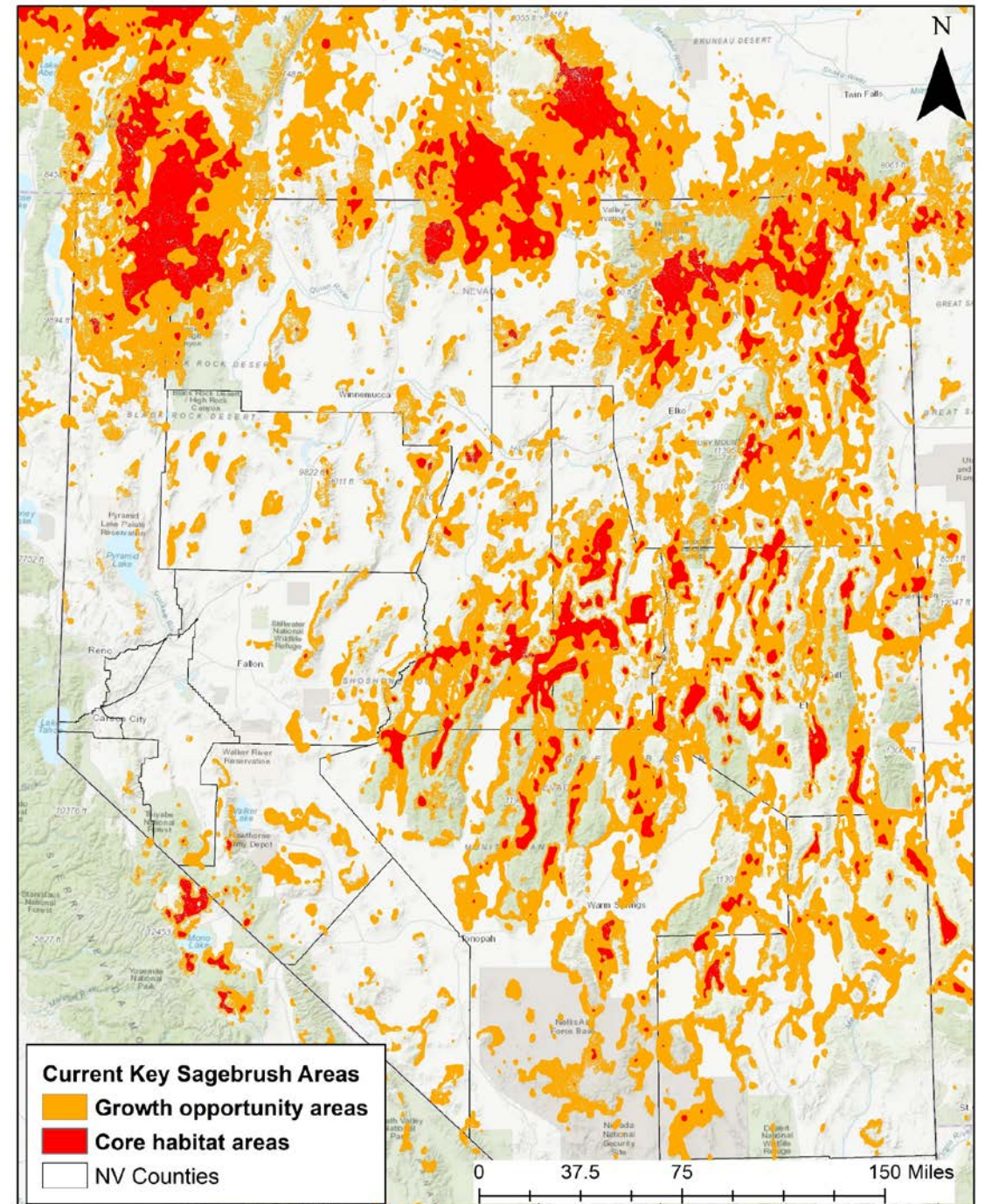


Strategic Action Plan: Prioritizing Layers

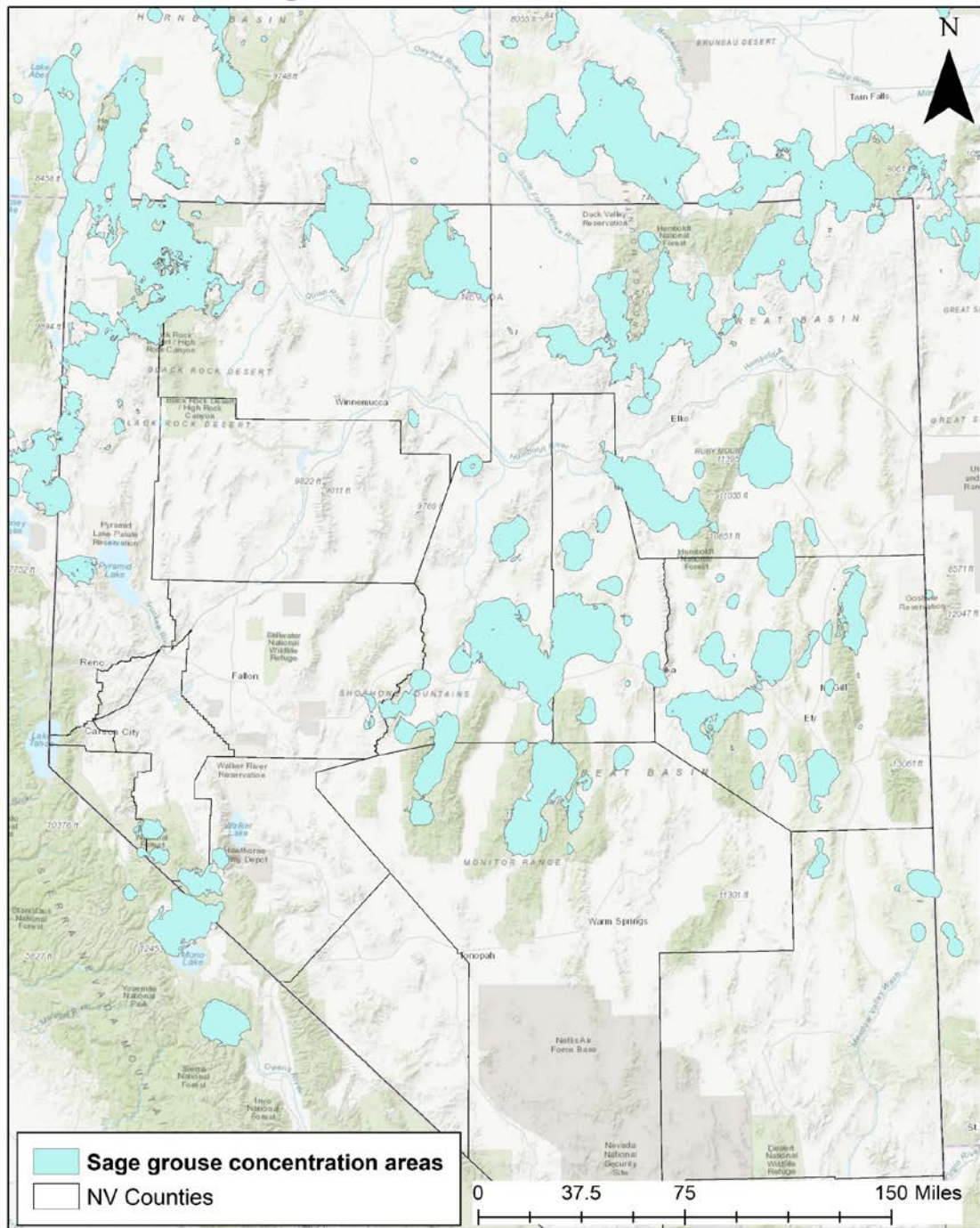
Sagebrush Conservation Strategy Map (WAFWA 2022) will act as the guiding base layer for initial identification of core areas

- Sagebrush cover categories
 - Core habitat areas
 - Growth opportunity areas
- Examples of other tool layers for consideration
 - Sage-grouse concentration areas
 - USGS connectivity
 - Great Basin Raven Density
 - Nevada only HMA
 - Nevada only USFS Wild Horse Territories (WHT)

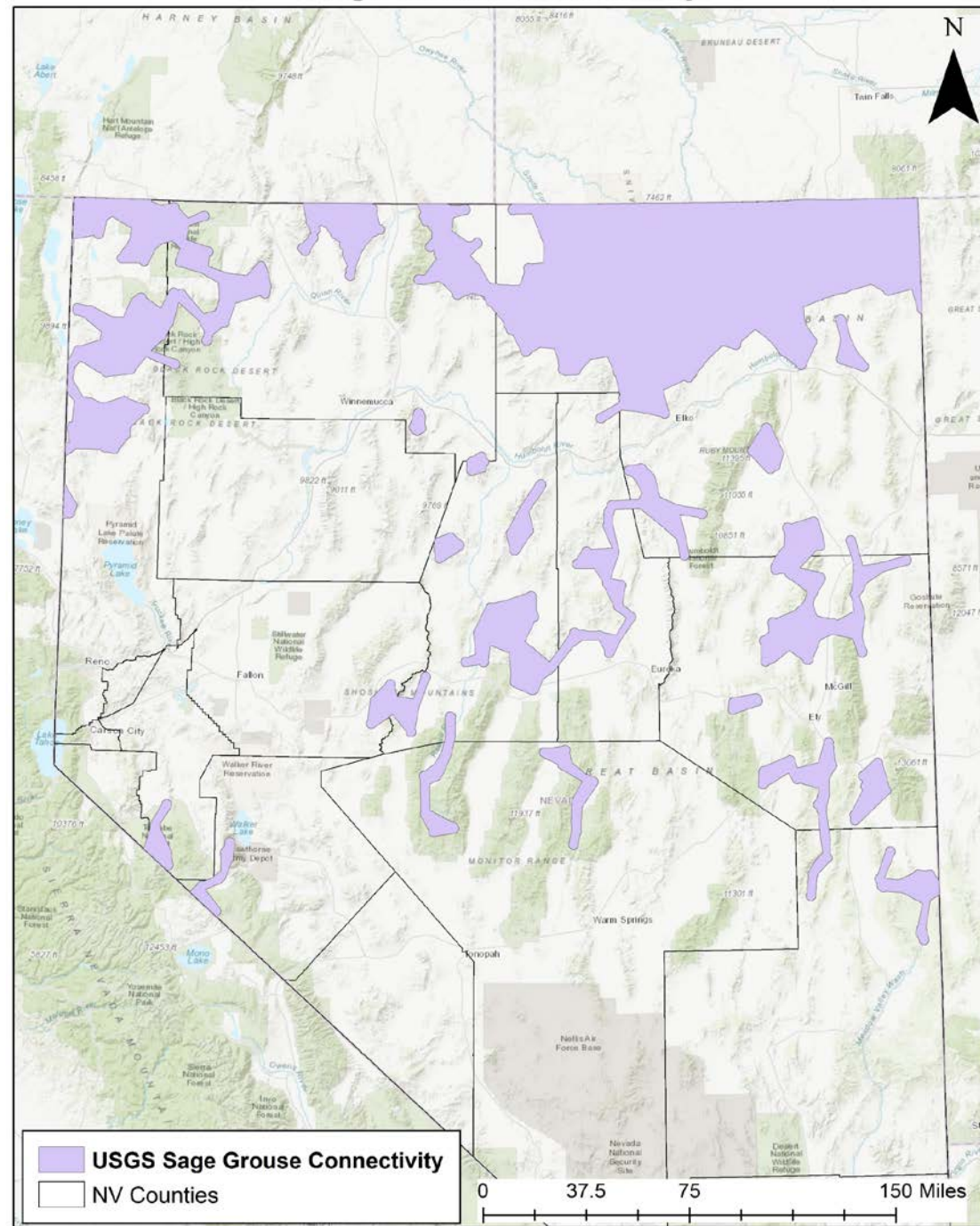
Key Sagebrush Areas



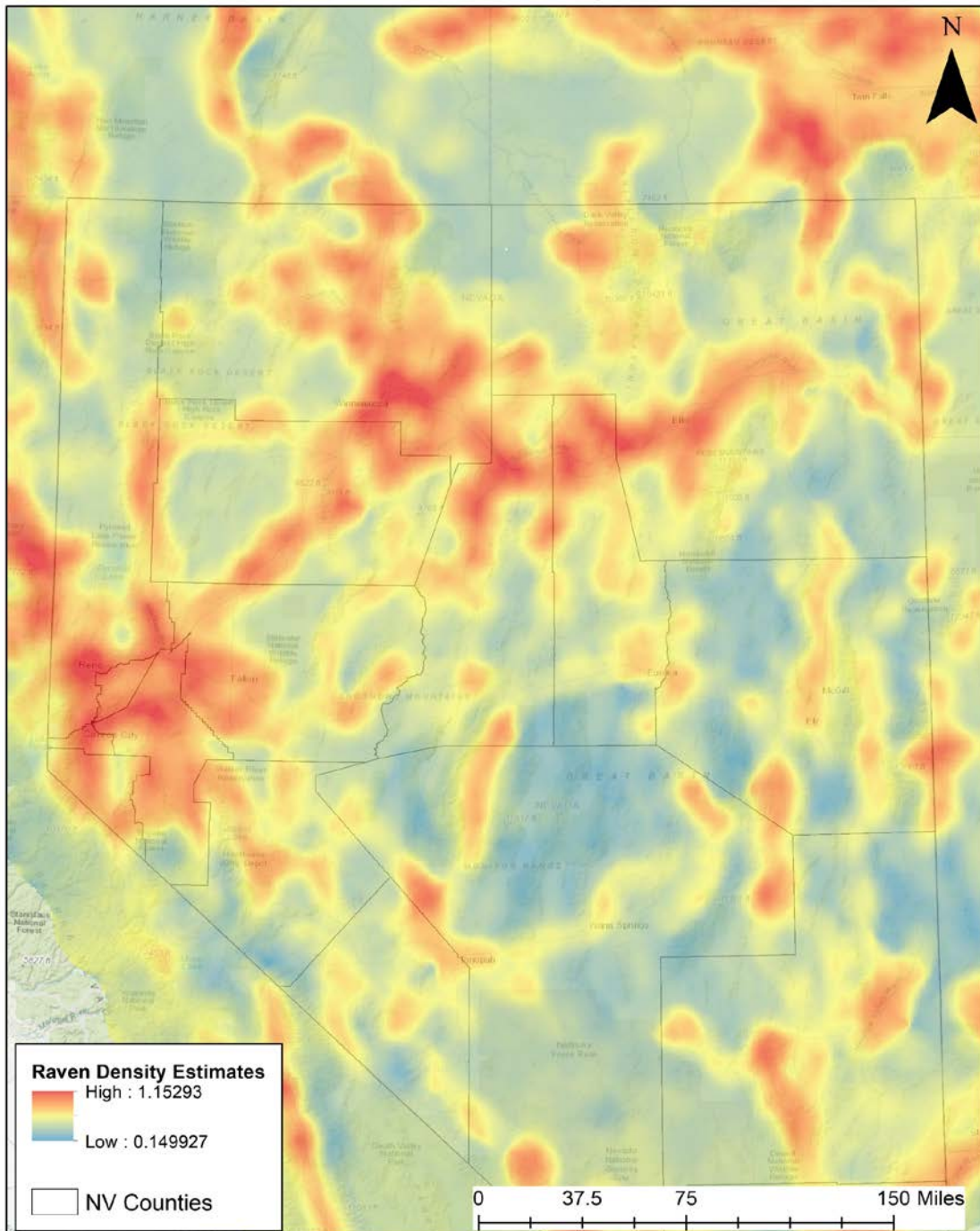
Sage Grouse Concentration Areas



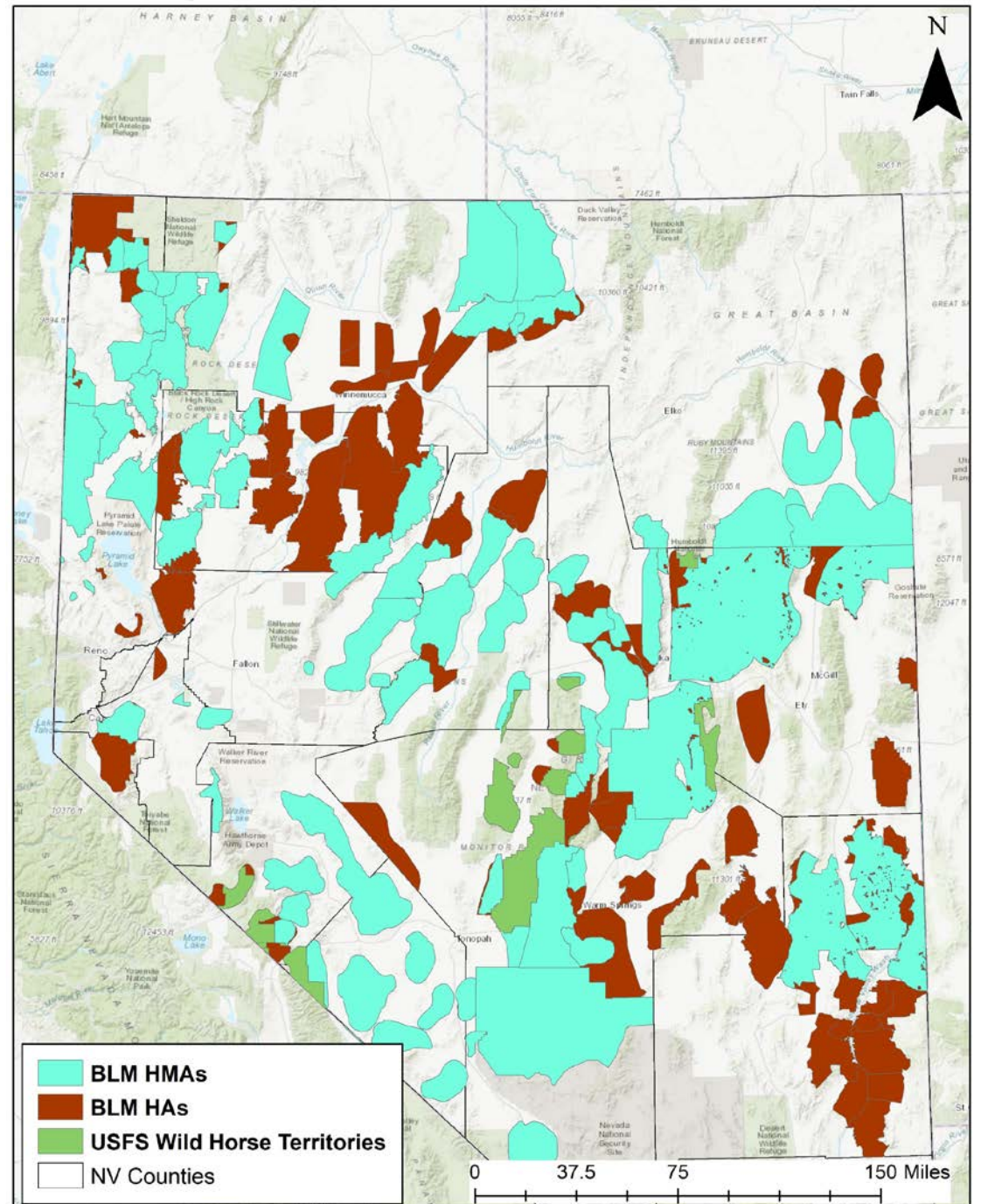
Sage Grouse Connectivity



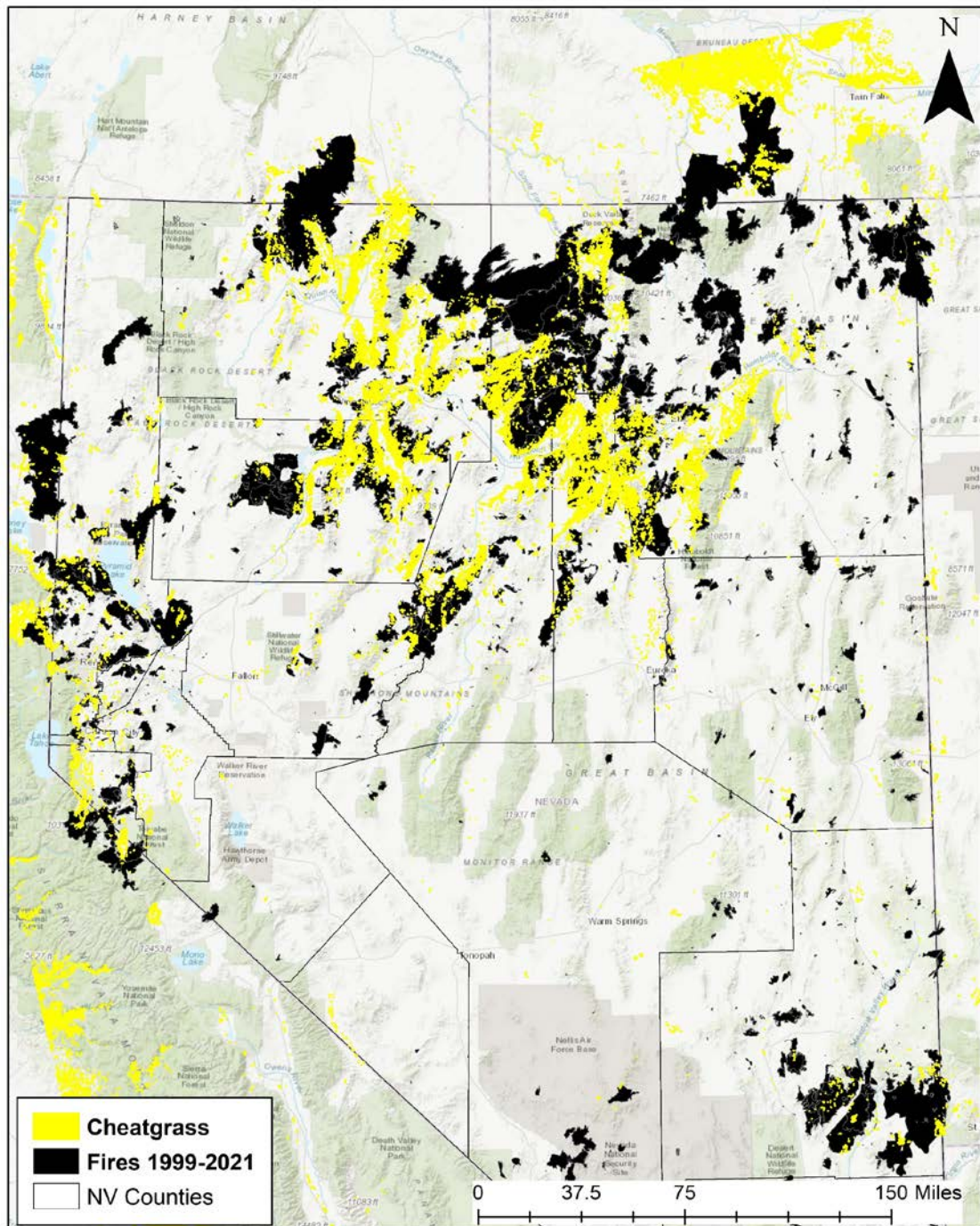
Raven Density



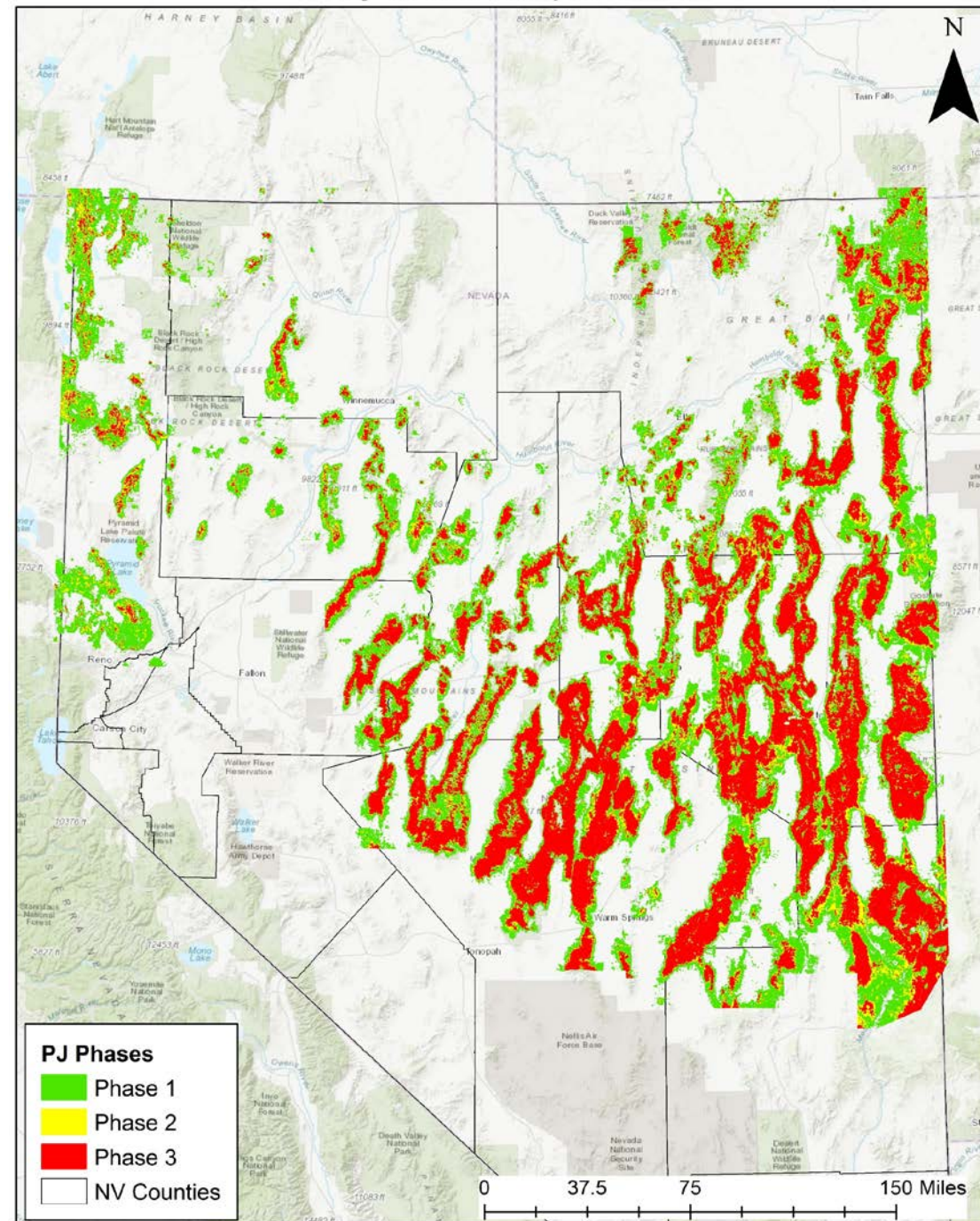
Herd Management Areas, Herd Areas, and Wild Horse Territories



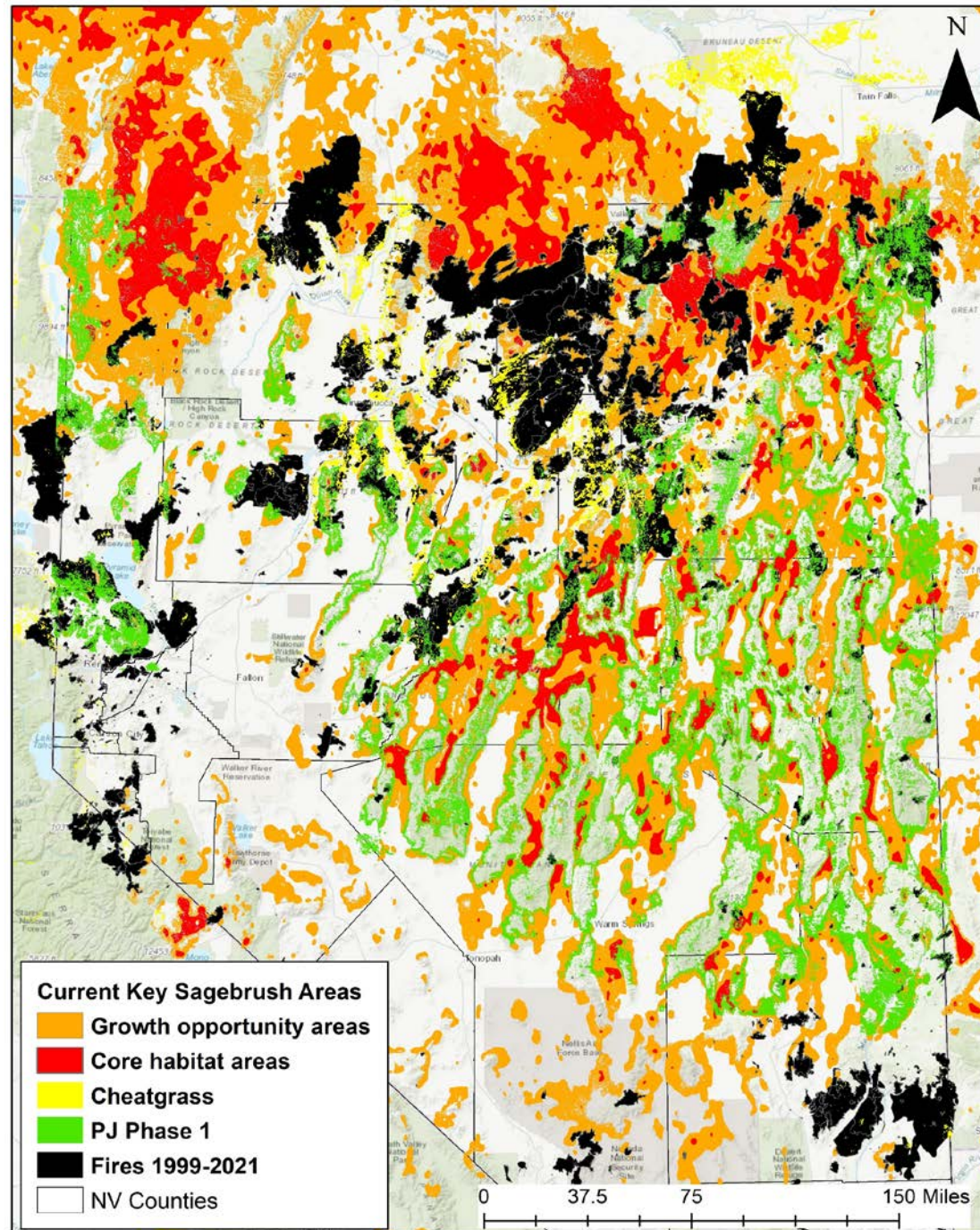
Fire and Invasive Annuals



Pinyon and Juniper Cover



Sagebrush Risk Map





Region and Local input across Nevada

- NDOW and the SETT to hold at least four meetings across the state to allow regional and local input.
 - Goals
 - Further refinement of core habitat areas for sagebrush obligate species.
 - Identify areas of conservation that might otherwise be overlooked
 - Gather local support to guide best conservation strategies.
 - Hold the date*
 - Winnemucca – January 17, 2023
 - Elko – January 18, 2023
 - Ely – January 18, 2023
 - Reno – January 19, 2023
- *Physical location and time TBD





Region and Local input across Nevada

- All these layers to consider when prioritizing conservation efforts
- Have planning tools to aid in process as applicable
- We can assist local conservation groups in application of tools and prioritization
- Incorporate into adaptive management process
- Collaboration with local agency partners

